

The
Superior
global solution
for ATM security
and access control



ASERIES™
ATM Access Management System





ASERIES ATM Access Management System

Three modes of operation

Bank Mode

- Save money – no key is required to access the lock in bank mode
- Sixteen user PIN positions available – simply enter a valid code to open the lock

Service Mode

- Users must have a unique four-digit PIN, touch key and one-time-use code to access the ATM
- Enhance security by selecting the start date, start time and duration of the one-time-use code

Bank + Service Mode

- The lock can be placed in both bank and service modes, so bank personnel can access the ATM in bank mode and service providers can access the ATM in service mode



Touch keys snap in securely to ensure reliable data transfer from lock to key.

Multiple Authentications for Greater Access Control

To access the ATM, users must have three forms of authentication:

- 1) A four-digit PIN unique to the individual user
- 2) An assigned touch key
- 3) A valid one-time-use code generated by the system software

Improved One-Time-Use Codes

ASERIES one-time-use codes will expire if not used within the operator-specified time window. This results in reduced risk, as the code is not “live” indefinitely until used.

Fast, Easy Installation

ASERIES is an easy retrofit onto existing and new ATMs – fewer parts and no spindles cut speed installation and reduce installation errors.

No Close Seal Required

ASERIES does not require entering a close code into the system software before generating a new code for the lock – this saves time and eliminates the risk of out-of-synch codes.

Time Is in the Lock, Not on the Key

Accurate time is critical to creating a reliable audit trail. By keeping the time in the lock, the ASERIES is not susceptible to time drift, which renders audit trail reports unreliable.

No Vendor Meets

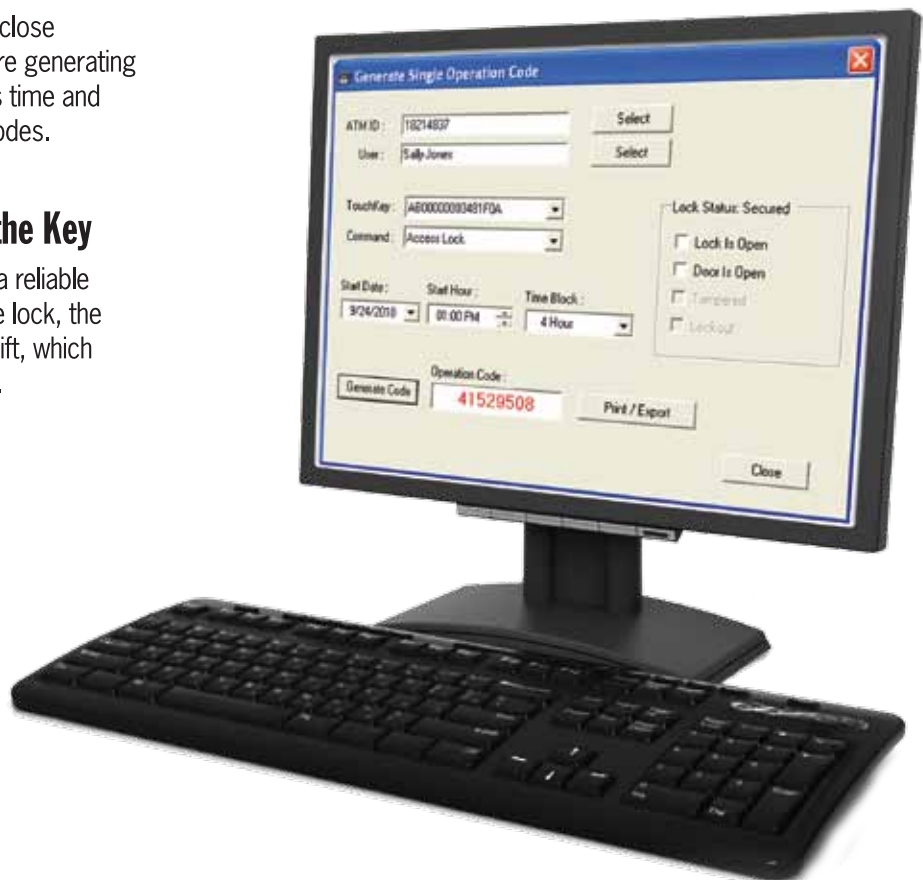
Traditional solutions require parties to physically meet at the ATM when initially assigning service mode access rights and again if changes in service providers occur. This practice is costly, time-consuming and inefficient. ASERIES utilizes secure file transfers to facilitate ATM access authorizations – a unique technology that saves time and money while allowing greater control of subcontractor access.

Multi-Language Software

ASERIES Lock Management Software (LMS) can meet global ATM deployment needs by offering multiple languages. Select from one of the standard languages, or translate LMS screens into any other language using the LMS Custom Translator feature (v. 9.3x and later).

Technical Support

Technical support is global, multilingual and offered 24/7 by our highly trained ASERIES specialists.





Worldwide Listed

Multiple listings for worldwide security. ASERIES is listed by the following agencies:
UL® Type 1, VdS Klasse 2, CEN EN 1300 Class B, A2P/CNPP Class B/E



ASERIES Lock

The ASERIES lock is available with two bolt styles: Blocking and Push Pull. (Visual show bolts of 6128 and 6129 pre-drilled holes.) The Push Pull model is ideal for vault applications. Each model comes standard with a bolt position indicator and a secure loop for connecting door switches or other security devices.



Multi-Language Software

ASERIES software is designed to meet your global ATM deployment needs. Standard user-selectable languages include: English, French, Spanish, German, Polish, Portuguese and Chinese simplified. As your language support needs expand, translate LMS screens into any other language using the LMS Custom Translator feature (v. 9.3x and later).



STANLEY

SARGENT AND GREENLEAF®

sargentandgreenleaf.com
stanleysecuritysolutions.com

The ASERIES solution combines state-of-the art access control software with S&G's high-security lock technology to provide ATM manufacturers, banks, ISOs and armored car companies unprecedented ATM security.

**Lock up more
ATM profits
with ASERIES
advanced
technology.**

ASERIES helps simplify and streamline ATM access while improving security.

Sargent and Greenleaf (S&G), a Stanley Security

Solutions company, is a global company with a

rich heritage of innovation, quality and customer support. With ASERIES installations worldwide, S&G is a proven leader and stands ready to support your ATM growth plans as your global ATM locking solutions partner.

PRODUCT SPECIFICATIONS

Access Control

User Authentication	Service Mode – eight-digit operation code and four-digit PIN (user-defined) and touch key Bank Mode – six-digit combination and two-digit PIN position
One-Time Combination	Yes (Service Mode)
User-Defined Combinations	Yes (Bank Mode)
Wrong Combo Penalty	Yes
Central Control	Yes (with LMS software)
Audit Trail	Lock – 400 events (most recent), Open and Close constitutes one event, "User" touch key – 100 events, "Manager" touch key – 38 events
Audit Reports	Via LMS software
Operating Modes	Three (Bank Mode, Service Mode, Bank and Service Mode)
Time Windows by User	Yes

Alarm Interface

Duress Combination	Yes (Bank Mode and Service Mode)
Alarm Shunt	Yes
Bolt Status	Yes

Agency Approvals

U.L. – Type 1 (USA)
VdS – Class 2 (Germany)
CEN-EN 1300 (Europe)
A2P/CNPP- Class B/E (France)

Environmental

Operating Temperature	0°C to 60°C @ 90% RH
Humidity	Up to 95% RH
ESD	5kV to 25kV
Endurance	25,000 operations
Vibration	Three-axis, 10-150MHz, 1G acceleration, Three oct/min (per IEC 68-2-2)
Shock	50 G (per IEC 68-2-27)
Mechanical Attack	30 minutes

MECHANICAL & ELECTRICAL SPECIFICATIONS

Mechanical

Keypad	1.44" H x 4" D
Lock Body	3.32" L x 2.4" W x 1.1" H
Keypad	12-button sealed w/ tactile feedback
Display	LED response light for keypad input – three color-coded status indicators for lock function

Electrical

Power	Two 9V batteries (Duracell recommended), AC hardware adapter (optional) Battery life under normal operations – two years
Touch Key	8K-bit & 64K-bit (DS1995 & DS 1996) read-write memory, multi-stage encrypted

SOFTWARE SPECIFICATIONS

Lock Management System Software

Operating System	Server or stand-alone application—Windows® 7 (32/64 bit Ultimate and Professional), Windows Server 2003/2008, Windows XP
Language Support	English, Spanish, French, German, Polish, Portuguese, Chinese simplified are standard. Quickly translate LMS screens into any other language with the LMS Custom Translator. (v.9.3x and later)
Qty Locks Controlled	Limited only by available Hard Disk Space
Qty Users Managed	Limited only by available Hard Disk Space
Qty of Audit Events	Unlimited when properly archived
Multi-Level Access	Yes
Audit Reports	Yes
Lock Status Reports	Yes
User Reports	Yes

Minimum PC Requirements

Server or Stand-alone Application	2 GB of RAM Up to 500 MB of free disk space Available USB or serial port for touch key adapter
Client Application	1 GB of RAM Up to 250 MB of free disk space Available USB or serial port for touch key adapter

Database Platform

LMS software supports the following database platforms:	Microsoft SQL 2005/2008, Express, Standard or Enterprise editions Express version provided with LMS. Standard or Enterprise editions must be obtained by customer
---	--

Link Software

Operating System	Windows 7 (32/64 bit Ultimate and Professional), Windows Server 2003/2008, Windows XP
Minimum PC Requirements	1 GB of RAM Up to 250 MB of free disk space

OPTIONAL MODULES

Duress Module (6102-090) and Remote-Enable Module with Duress (6102-100)

Receives duress signal from lock and relays signal to police or alarm company
Remotely controls access to lock via alarm company or other third party (6102-100 only)
Supplied cable for easy connection
Terminal strip connections for alarm company
No external power supply required to operate module

About Sargent and Greenleaf

Sargent and Greenleaf, a subsidiary of Stanley Security Solutions, is one of the world's leading manufacturers of medium and high-security locks and locking systems. Since 1857, Sargent and Greenleaf has provided security solutions to financial institutions, commercial businesses, governments and consumers around the world. Delivered through an international network of distribution partners, Sargent and Greenleaf products continue to set the standard for quality, value and technical innovation.

Corporate Headquarters
One Security Drive
Nicholasville, KY 40356
859.885.9411
859.885.3063



European Headquarters
9, chemin du Croset
1024 Ecublens
Switzerland
41.21.694.3400

sargentandgreenleaf.com

stanleysecuritysolutions.com

630-802
5/11